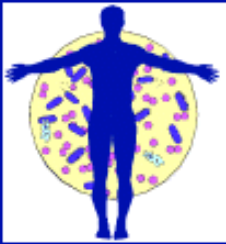


SB
V
I
M
K
C



Société belge d'infectiologie et de microbiologie clinique

Belgische vereniging voor infectiologie en klinische microbiologie

NEW ANTI-INFECTIVE AGENTS IN 2003 : SPECTRUM AND INDICATIONS

20th Symposium (spring 2003)

Thursday May 22nd 2003

The slides presented at this meeting are available on this site as "Web slide shows" and as ".PDF files". They reflect the views of their authors and should not be taken as being endorsed by the organizers and/or the organizing societies. They are presented for information purposes only. They cannot be reproduced or used for any form of presentations without the authorization of their author and of the SBIMC/BVIKM.

Please, contact the SBIMC-BVIKM Webmaster (webmaster@sbimc-bvikm.org) for further information.

Ertapenem

Y. Glupczynski

Laboratoire de Bactériologie

Cliniques Universitaires UCL Mont-Godinne



Development of carbapenems

- Thienamycin (1970) (*Streptomyces cattleya*)



- Imipenem (N-formimidoyl) (1977) → 1988

- Meropenem (1984) → 1997

- Ertapenem (1989) → 2002 (EU) (2003 Belgium ?)

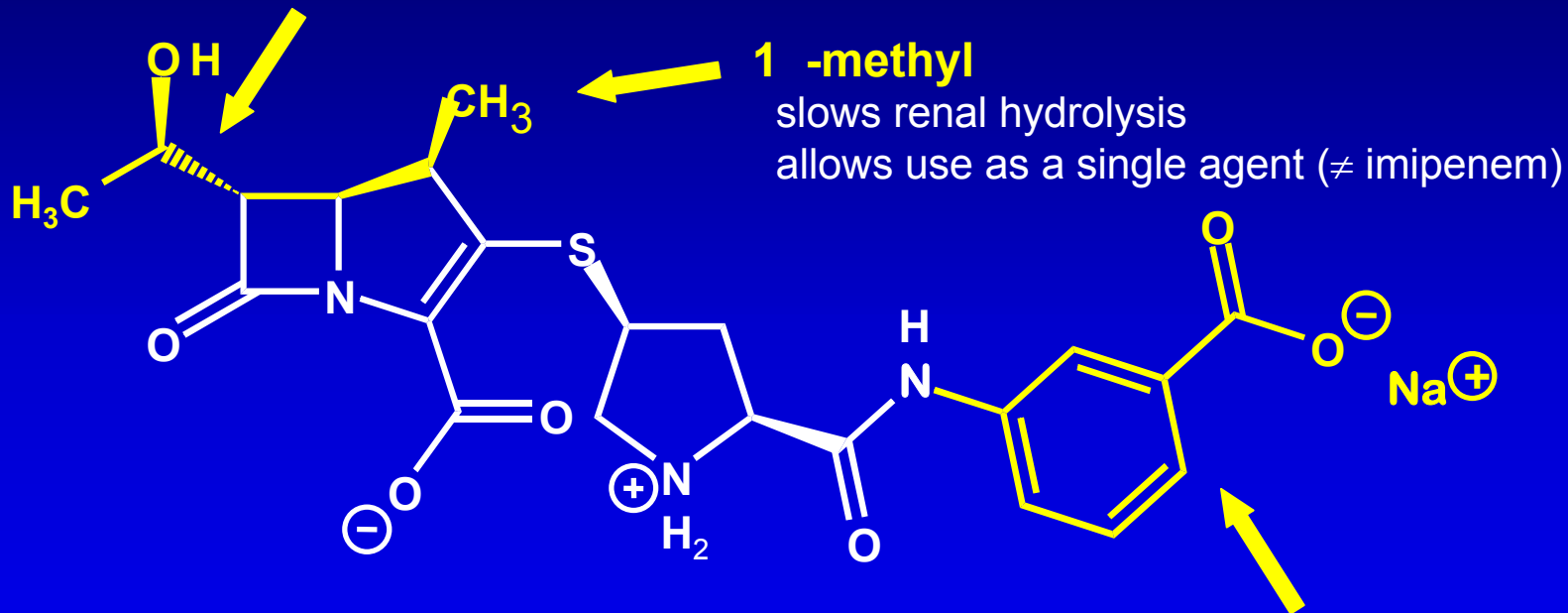
Microbiologic properties of carbapenems

- Broadest spectrum of activity (G+, G-, anaerobes)
- Rapid penetration through outer membrane of G- bacteria
- High stability to hydrolysis by plasmidic or chromosomal β -lactamases (ESBL, AmpC enzymes)
- Binding to essential PBPs (mainly PBP-2)
- Rapid bactericidal activity against G- bacilli and G+ cocci (MBC \approx 2x MIC)
- Post-antibiotic effect (against G +) : 1.5-2.0 h

Ertapenem: structure-activity relationship

unique to carbapenems
contributes to β -lactamase stability

Trans hydroxyethyl



1-methyl

slows renal hydrolysis
allows use as a single agent (\neq imipenem)

Benzoate moiety

changes overall molecular charge, making it highly protein bound (>90%), and thereby, increases $t_{1/2}$ (\approx 4 h), allowing once-a-day dosing

Ertapenem: spectrum of activity

- Broad spectrum (G+, G-, anaerobes):
 - Stable to most plasmidic and chromosomal β -lactamases including ESBL and AmpC (Cephalosporinases)
 - Gram -: ERTA \approx MERO $>$ (2-8x) IMIP (*Enterobacteriaceae*)
(MIC₉₀ \leq 1 μ g/ml)
 - Gram +: IMIP (x2-4) $>$ ERTA \approx MERO
 - Anaerobes: MERO \geq IMI \geq ERTA
- Poor activity against: *P. aeruginosa*, *Acinetobacter* spp.,
S. maltophilia, Enterococci, MRSA, PRSP

In vitro activity of ertapenem against *Enterobacteriaceae* isolates in Belgian ICUs

Organisms	n° of isolates	Range	MIC ₅₀	MIC ₉₀	% not susceptible*
<i>E. coli</i>	367	0.06-0.25	0.06	0.06	0.0
<i>K. pneumoniae</i>	112	0.06-1	0.06	0.12	0.0
<i>K. oxytoca</i>	91	0.06-16	0.06	0.06	1.3
<i>P. mirabilis</i>	86	0.06-1	0.06	0.06	0.0
<i>P. vulgaris</i>	23	0.06-0.12	0.06	0.12	0.0
<i>E. aerogenes</i>	180	0.06-32	0.25	1	5.5
<i>E. cloacae</i>	146	0.06-32	0.06	1	3.4
<i>S. marcescens</i>	71	0.06-4	0.06	0.25	0.0
<i>M. morgani</i>	56	0.06-16	0.06	0.12	1.7
<i>P. stuartii</i>	11	0.06-0.25	0.06	0.12	0.0

* according to NCCLS susceptibility breakpoint criteria

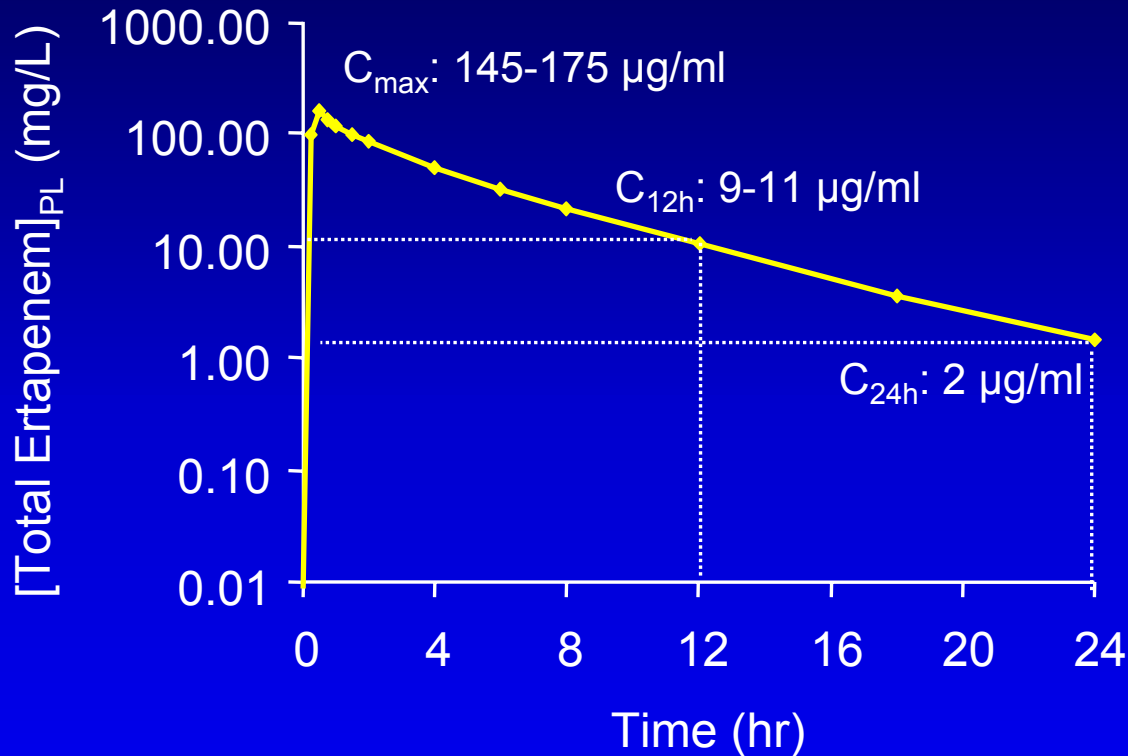
Comparative activity of ertapenem and other carbapenems against *E. aerogenes*

Antibiotics	Range	MIC ₅₀	MIC ₉₀	% not susceptible*
ESBL +ve (181)				
Ertapenem	0.03->32	0.5	1	2.5
Imipenem	0.03-8	0.25	1	2.2
Meropenem	0.03-8	0.03	0.25	1
ESBL -ve (104)				
Ertapenem	0.03-1	0.25	0.5	0.0
Imipenem	0.03-2	0.12	1	0.0
Meropenem	0.03-0.25	<0.03	0.12	0.0

Ertapenem: pharmacokinetics

Properties	Imipenem	Meropenem	Ertapenem
Half-life (h)	1	1	3.8-4.4
Nr adm./d	3-4	3-4	1
Peak serum [] ($\mu\text{g/ml}$)			
0.5 g IV	40	25-35	70-85
1.0 g IV	70	55	145-175
% protein binding	15-25	<20	85-94
Elimination route	Renal (20% active)	Renal (65-75% active)	Renal (80%, 40-45% active)
[CSF] (% [serum])	10-40	6-42	?

Ertapenem Total Plasma Concentrations versus MIC₉₀ of Common Pathogens



MIC ₉₀ (mg/L)	Organism
16	<i>P. aeruginosa</i> , other nonfermenters, <i>Enterococcus</i> , MRSA
1.0	Anaerobes (all), <i>B. fragilis</i> group, PRSP
0.25	MSSA, <i>S. pneumoniae</i> (all), <i>Enterobacter</i>
0.125	<i>H. influenzae</i> , <i>S. agalactiae</i>
0.03	<i>Klebsiella</i> , <i>S. pyogenes</i>
0.016	<i>E. coli</i> , <i>M. catarrhalis</i>

NCCLS Interpretive Susceptibility Criteria for Ertapenem

Breakpoints

<u>Organism</u>	<u>Dilution MIC*</u>			<u>Disk Diffusion*</u>		
	<u>S</u>	<u>I</u>	<u>R</u>	<u>S</u>	<u>I</u>	<u>R</u>
Enterobacteriaceae	≤2	4	≥8	≥19	16-18	≤15
<i>Staphylococcus</i> spp	≤2	4	≥8	≥19	16-18	≤15
<i>Haemophilus</i> spp.	≤0.5			≥19		
<i>S. pneumoniae</i> (non-meningitis)	≤1	2	≥4	-	-	-
<i>Streptococcus</i> spp. (β-hemolytic)	≤1			-	-	-
Anaerobes	≤4	8	≥16	-	-	-

* MIC in mg/L; disk diffusion zone size in mm

Ertapenem

Pharmacokinetic-Pharmacodynamic Correlations

- Key PK/PD parameter is “time above MIC”
 - mean time above MIC to achieve static effect as proportion of dosing interval in anephric neutropenic mice

Organism	Total Drug	Free Drug
Gram-negative bacilli	34.5%	16.5%
<i>S. aureus</i>	43.0%	24.7%
<i>S. pneumoniae</i>	24.2%	6.2%

Ertapenem: Resistance

- Enterobacteriaceae

- Resistance rarely observed ($\text{MIC}_{90} \leq 0.25 \mu\text{g/ml}$) even in ESBL or AmpC β -lactamase producing organisms
- Little inoculum effect (identical MIC at 10^7 cfu and 10^5 cfu)
- Second mechanism (reduced uptake, efflux) required for resistance
- *Enterobacteriaceae* pre-Rx isolates from clinical studies
 - ERTA susceptible 97.4%
 - IMIP susceptible 99.3%
- ESBL-positive organisms (*E. coli*, *Klebsiella* spp., *Enterobacter* spp.)
 - ERTA susceptible 96.5%
 - IMIP susceptible 98.8%

Ertapenem: Resistance

- *Enterobacteriaceae*

- Less persisting strains in patients treated with ERTA than with comparators (PIP/TAZO)
- Less bowel colonization by resistant *Enterobacteriaceae* isolates following Rx with ERTA than with PIP/TAZO ($\leq 1\%$ vs 14%)

Ertapenem: Resistance

- *P. aeruginosa*

- ERTA not active against most (60-70%) *P. aeruginosa* isolates susceptible to other carbapenems

- In vitro surveillance data: cross-resistance to carbapenems

IMIP-susceptible:	1.8% MERO-resistant
-------------------	---------------------

MERO-susceptible	4.6% IMIP-resistant
------------------	---------------------

ERTA-resistant	68.3% IMIP/MERO-susceptible
----------------	-----------------------------

IMIP-resistant	100% ERTA-resistant
----------------	---------------------

Ertapenem: Cross-resistance to carbapenems in *P. aeruginosa*

In vitro selection of various efflux/impermeability resistance mechanisms following exposure to ERTA

Mechanism of resistance	Ertapenem	Meropenem	Imipenem
↓ OprD2 mutants	R	I/S	R
OprM efflux	R	R	S
MK-X efflux	R	R	S

Type of mutation selected variable and dependent on strain background

Ertapenem: Concern about resistance in *P. aeruginosa*

- No selective pressure for resistance mechanisms in naturally resistant organisms
- No selective pressure if antibiotic does not meet the micro-organism
 - Target population rarely colonized with *P. aeruginosa* (non-ICU patients, community-acquired mixed infections)
 - Short duration of treatment anticipated (7-14 days)
- Origin of resistance in *P. aeruginosa* more frequently due to spontaneous mutations occurring in vivo than to clonal spread (cf. ESBL-producing *Enterobacteriaceae*)
- Selection of carbapenem-resistant isolates rarely found in development clinical trials so far (will the risk ↑ once marketed ?)

Ertapenem: Indications

	FDA	EMEA
Intra-abdominal infection	+	+
Acute gynaecological infection	+	+
Community-acquired pneumonia	+	+
Complicated SSTI	+	-
Complicated UTI	+	-

Ertapenem: Clinical trials

8 international multicenter DB RCT (>20 countries; >5000 pts treated)

ERTA (1g/od) vs Pipe/ Tazo (3.375 g/q6h)

- Intra-abdominal infection
- Acute gynaecological infection
- Complicated SSTI

ERTA (1g/od) vs Ceftriaxone (1 g/od)

- Community-acquired pneumonia (2 studies)
- Complicated UTI (2 studies)
- Intra-abdominal infection (CTX + metronidazole)

Ertapenem: Clinical trials

- **Intra-abdominal infection**

- Solomkin JS, et al. Ann Surg 2003; 237: 235-45
- Yellin AE et al, et al. Int J Antimicrob Agents 2002; 20:165-73

- **Community-acquired pneumonia**

- Ortiz-Ruiz G, et al. Clin Infect Dis 2002; 34: 1076-83
- Vetter N, et al. Clin Ther 2002; 24: 1770-85

- **Complicated SSTI**

- Graham D, et al. Clin Infect Dis 2002; 34: 1460-8

- **Complicated UTI**

- Tomera KM, et al., Antimicrob agents 2002; 14: 483-91
- Jimenez-Cruz F et al., Urology 2002; 60: 16-22

- **Acute gynaecological infection**

- Not yet published

Ertapenem: Clinical trials

- **Clinical cure rates equivalent to comparator**

- Intra-abdominal infection (ERTA 1g/d vs PIP/TAZO 3.375g q6h)

m ITT	79.3%	versus	76.2%
-------	-------	--------	-------

PP	86.7%	versus	81.2%
----	-------	--------	-------

- Community-acquired pneumonia (ERTA 1 g/d vs CTX 1 g/d)

m ITT	85.2%	versus	84.8%
-------	-------	--------	-------

PP	92.3%	versus	91.0%
----	-------	--------	-------

- **Failures not related to resistance**

Ertapenem: Clinical trials

Intra-abdominal infections

		ERTA	P/T
• Primary site:	appendix	47%	47%
	colon	17%	21%
	cholecystitis	8%	4%
• Infectious process:	generalized peritonitis	30%	29%
	localized peritonitis	35%	34%
	single abscess	29%	34%
	multiple abscesses	5%	3%
	post-operative	12%	13%
• APACHE II score:	0 - 9	70%	75%
	10 -14	21%	18%
	≥ 15	9%	7%

Ertapenem: Treatment of generalized peritonitis

- Complicated intra-abdominal infection
DB RCT (N=185 of 623 pts. (30%) with generalized peritonitis
- ERTA (N=60) versus Pip/Tazo (N=53)
 - 113 pts (61%) clinically and microbiologically evaluable
 - Median duration: 7 d - 8 d
 - Polymicrobial infection at entry: 92% - 83%
 - post-operative infection: 7% - 16%
- APACHE II score ≥ 15 : 14% - 10%
- Cure rates at end of Rx: 90% - 81%
- Cure rates at TOC (4-6 w): 83% - 74%
- Microbiological response: 74% - 70%

Ertapenem: Clinical trials

CAP

- Median duration of IV treatment 4 days; then amoxi/clav PO for 8 days (median)

	ERTA	CTX
• Age \leq 65 years	50%	52%
$>$ 65 years	33%	31%
$>$ 75 years	17%	17%
• Pneumonia severity index (Fine. NEJM 1997; 336: 243-50)		
PSI \leq 3	76%	72%
PSI $>$ 3	24%	28%
• Microbiological documentation:	41.6%	
<i>S. pneumoniae</i>	51%	(22% Peni non-susc SP)
<i>H. influenzae</i>	21%	

Ertapenem: Clinical trials

CAP

- Ertapenem group: N= 121 (with COPD); N=246 (without COPD)
- Post-hoc analysis of patients with CAP in 2 DB RCT (62 centers worldwide)
- Outcome in patients with COPD (n=264) / without COPD (n=593)

Males:	68% vs 54%
Age >65 years:	66% vs 30%
PSI > 3:	44% vs 19%
<i>H. influenzae</i>	13% vs 6% (no difference for SP and Enterobact.)
- Clinical cure (TOC at 7-14d): 90% vs 93%
 - Age > 65 years: 94%
 - PSI > 3: 88%

Ertapenem:

Health-care associated pneumonia acquired outside the ICU (024/025 study group)

- Nursing home + hospital ward (non ICU)
- ERTA (N=150) versus Cefepime(+/- metronidazole) (N=153)
 - 195 pts (64%) clinically & microbiologically evaluable
 - Median duration: 10 days (in both Rx groups)
 - Switch to oral Rx (≥ 3 days): 59% - 53%
- APACHE II score ≥ 15 : 24% - 21%
- Clinical outcome (TOC at 7-14 d): 87% - 86%
- Bacterial eradication:
 - Gram – bacilli 82% - 79%
 - S. Pneumoniae* 93% - 87%

Clinical Adverse Experiences

Ertapenem Drug-Related Adverse Experiences

During Parenteral Phase Across Phase II-III

Adverse events	ERTA (1, 1.5, 2 g) N=1960	PIP/TAZO (3.375 g q6h) N=775	CTX (1, 2 g) N=912
Diarrhea	4.3%	6.6%	3.7%
Nausea	2.8%	3.2%	2.6%
Vomiting	1.0%	1.5%	0.9%
Headache	2.1%	1.0%	2.2%
Infused vein complication	3.8%	5.5%	4.3%
Phlebitis/thrombophlebitis	1.2%	1.3%	1.4%
Seizures	0.2%	0.3%	0%

Laboratory Adverse Experiences

Ertapenem Drug-Related Adverse Experiences

During Parenteral Phase Across Phase II-III

	ERTA (1, 1.5, 2 g) N=1960	PIP/TAZO (3.375 g q6h) N=775	CTX (1, 2 g) N=912
↑ ALT	5.5%	4.4%	3.7%
↑ AST	4.9%	4.5%	4.2%
↑ Alkaline phosphatase	3.0%	3.9%	1.4%
↑ Platelets	1.9%	3.9%	0.4%

Ertapenem positioning and reimbursement: Belgian situation

- **Ongoing discussion at the CRM-CTG about appropriate use and reimbursement**
 - **CAP 3 & 4**
 - Guidelines (IDAB + other guidelines)
 - Comparators with narrower spectrum more suitable for CAP3
 - No/few data for CAP4
 - Price versus comparators
 - **Intra-abdominal / gynaecological (post-op) infection**
 - Convenience (once daily) / efficacy and safety
 - Moderate/severe–community-acquired or early hospital-acquired infections
 - Severity ≠ resistant pathogens
 - Comparators (narrower spectrum) for this indication
 - Price versus comparators

Price comparisons in Belgium

(per day of treatment)

Intra-abdominal infection / Acute pelvic infection

- Ertapenem
 - 1g x 1 = 45.00 €
- Amoxy-clav + amikacin
 - 3 x 2 g (17.18 €) + 1 x 1g (20.11€) = 37.29 €
- Cefuroxime + metronidazole
 - 3 x 1.5 g (19.91 €) + 3 x 500 mg (11.58 €) = 31.49 €
- Piperacillin-tazobactam + amikacin
 - 3 x 4 g (67.95 €) + 1 x 1g (20.11€) = 88.06 €
- Ciprofloxacin + metronidazole
 - 2 x 400 mg (69.58 €) + 3 x 500 mg (11.58 €) = 81.16 €

Ertapenem: possible future options

- **CAP: need to focus on specific patient groups**
 - Nursing home-acquired pneumonia
 - Aspiration pneumonia
 - Early hospital-acquired pneumonia (non-ICU setting)
- **ESBL producing pathogens**
 - Changing evolution of epidemiology in hospitals / community (MR Enterobacter aerogenes ?)
- **Switch therapy after administration of carbapenems/cefepime for infections with difficult-to-treat organisms**
 - IV line problems, out-patient therapy